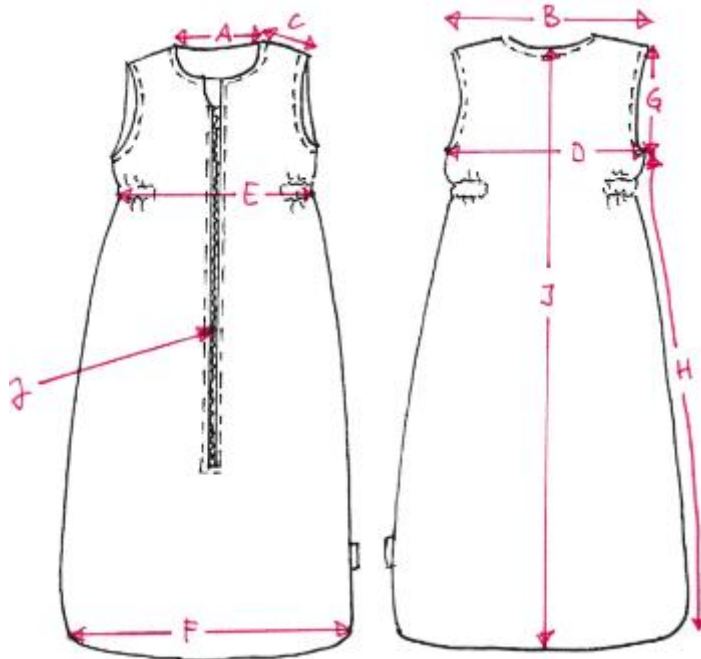


## K19 Final Measures Boiled-Wool Sleeping Bag (in cm & inches)

	Description	1	2	3
<b>A</b>	Neck width	11,0 cm 4,3 in	11,6 cm 4,5 in	12,2 cm 4,8 in
<b>B</b>	Shoulder width complete	22,5 cm 8,8 in	24,3 cm 9,5 in	26,1 cm 10,2 in
<b>C</b>	Single shoulder	6,1 cm 2,4 in	6,7 cm 2,6 in	7,4 cm 2,9 in
<b>D</b>	1/2 bust measurement	29,0 cm 11,4 in	32,0 cm 12,5 in	34,6 cm 13,6 in
<b>E</b>	1/2 waist measurement unstretched	26,0 cm 10,2 in	29,0 cm 11,41 in	32,0 cm 12,5 in
<b>F</b>	1/2 sleeve hem width	38,0 cm 14,9 in	45,4 cm 17,8 in	52,8 cm 20,7 in
<b>G</b>	Armhole depth	12,3 cm 4,8 in	14,4 cm 5,6 in	16,0 cm 6,2 in
<b>H</b>	Side length	50,0 cm 19,6 in	69,9 cm 27,5 in	88,1 cm 34,6 in
<b>I</b>	Back length measured at the middle	62,9 cm 24,7 in	84,7 cm 33,3 in	104,5 cm 41,1 in
<b>J</b>	Zip fastener length measured at the middle	45,0 cm 17,7 in	60,0 cm 23,6 in	75,0 cm 29,5 in



All quoted measures are approximate dimensions and may differ from the actual measures slightly.