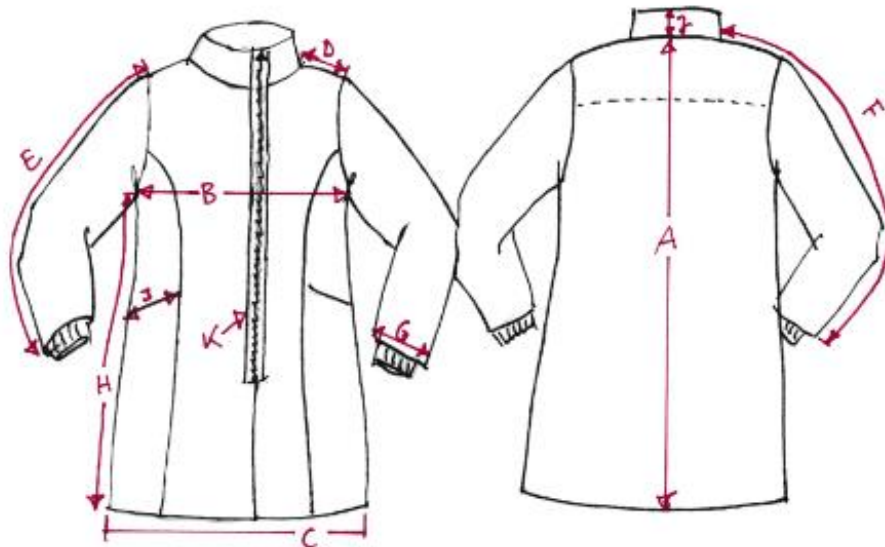


K19 Final Measures Children's boiled-wool coat (in cm & inches)

	Description	98/104	110/116	122/128	134/140	146/152
A	Back length	55,0 cm 21,6 in	60,1 cm 23,6 in	65,1 cm 25,6 in	70,2 cm 27,6 in	77,4 cm 30,4 in
B	1/2 chest measurement	29,8 cm 11,7 in	33,8 cm 13,3 in	37,8 cm 14,8 in	41,8 cm 16,4 in	45,8 cm 18,03 in
C	1/2 hem width, measured in straight line	37,4 cm 14,7 in	42,4 cm 16,6 in	47,4 cm 18,66 in	52,4 cm 20,62 in	57,6 cm 22,6 in
D	Shoulder width	6,4 cm 2,5 in	6,9 cm 2,7,1 in	7,4 cm 2,9 in	8,1 cm 3,1 in	9,0 cm 3,5 in
E	Sleeve length	33,0 cm 12,9 in	37,6 cm 14,8 in	42,2 cm 16,6 in	46,8 cm 18,4 in	53,7 cm 21,14 in
F	Sleeve length including shoulder	39,4 cm 15,5 in	44,5 cm 17,5 in	49,6 cm 19,5 in	54,9 cm 21,6 in	62,7 cm 24,6 in
G	1/2 sleeve hem width	9,8 cm 3,8 in	10,4 cm 4,09 in	10,9 cm 4,2 in	11,5 cm 4,5 in	12,0 cm 4,7 in
H	Side length	38,5 cm 15,1 in	42,0 cm 16,5 in	45,6 cm 17,9 in	49,0 cm 19,2 in	54,3 cm 21,3 in
I	Pocket mouth length	10,7 cm 4,2 in	12,1 cm 4,7 in	13,1 cm 5,1 in	14,2 cm 5,5 in	15,4 cm 6,0 in
J	Collar height	5,5 cm 2,1 in	5,5 cm 2,1 in	5,5 cm 2,1 in	5,5 cm 2,1 in	5,5 cm 2,1 in
K	Zip fastener length	48 cm 18,8 in	52 cm 20,4 in	56 cm 22,0 in	60 cm 23,6 in	64 cm 25,1 in



All quoted measures are approximate dimensions and may differ from the actual measures slightly.