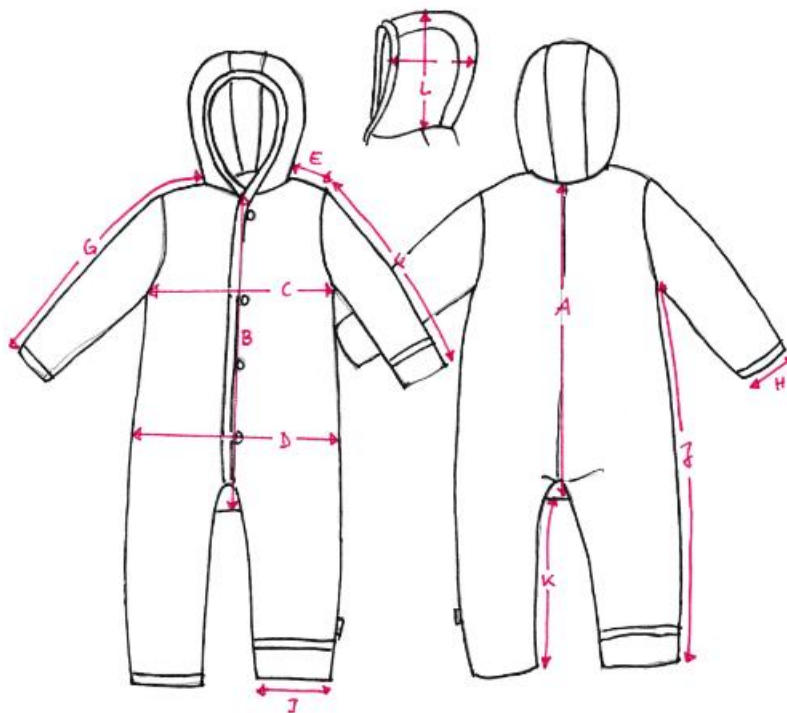


K19 Final Measures Boiled-Wool Overall (in cm & inches)

	Description	50/56	62/68	74/80	86/92
A	Back length incl. crotch	37,2 cm 14,6 in	41,5 cm 16,3 in	45,6 cm 17,9 in	50,7 cm 19,9 in
B	Length front incl. crotch	35,6 cm 14,01 in	39,2 cm 15,43 in	44,3 cm 17,44 in	48,9 cm 19,25 in
C	1/2 chest measurement	27,2 cm 10,7 in	29,2 cm 11,4 in	30,4 cm 11,9 in	32,1 cm 12,6 in
D	1/2 hip measurement	30,1 cm 11,8 in	32,4 cm 12,7 in	34,0 cm 13,3 in	35,6 cm 14,0 in
E	Shoulder width	5,3 cm 2,0 in	6,0 cm 2,3 in	6,4 cm 2,5 in	6,7 cm 2,6 in
F	Sleeve length	19,4 cm 7,6 in	23,9 cm 9,4 in	28,4 cm 11,1 in	33,2 cm 13,0 in
G	Sleeve length incl. shoulder	24,6 cm 9,6 in	29,8 cm 11,7 in	34,8 cm 13,7 in	39,9 cm 15,7 in
H	1/2 sleeve hem width	9,2 cm 3,6 in	9,7 cm 3,8 in	10,5 cm 4,1 in	10,5 cm 4,1 in
I	1/2 leg hem width	11,4 cm 4,4 in	12,4 cm 4,8 in	13,3 cm 5,2 in	13,3 cm 5,2 in
J	Side length	38,4 cm 15,1 in	45,5 cm 17,9 in	54,2 cm 21,3 in	65,1 cm 25,6 in
K	Inside leg measured from crotch onwards	11,7 cm 4,6 in	16,4 cm 6,4 in	20,9 cm 8,2 in	27,3 cm 10,7 in
L	Hood measured from shoulder point onwards	21,9 cm 8,6 in	22,6 cm 8,8 in	23,4 cm 9,2 in	24,1 cm 9,4 in
M	Hood width	18,3 cm 7,2 in	18,9 cm 7,4 in	19,4 cm 7,6 in	19,8 cm 7,7 in
N	Number of buttons incl. spare button	5	5	6	6



All quoted measures are approximate dimensions and may differ from the actual measures slightly.