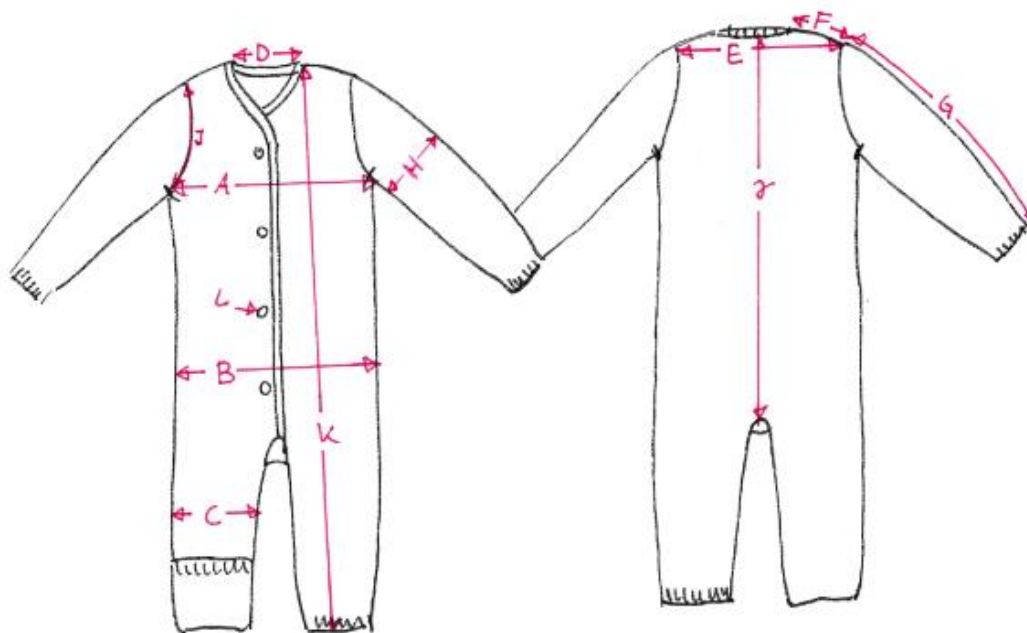


K19 Final Measures Knitted Overall (in cm & inches)

	Description	50/56	62/68
A	1/2 Chest	25,5 cm 10,0 in	27,0 cm 10,6 in
B	1/2 Hip	25,5 cm 10,0 in	27,0 cm 10,6 in
C	1/2 Upper leg	12,0 cm 4,7 in	12,8 cm 5,0 in
D	Neck hole width measured inside	7,4 cm 2,9 in	7,8 cm 3,0 in
E	Shoulder width complete	6,2 cm 2,4 in	7,0 cm 2,7 in
F	Single shoulder width	18,8 cm 7,4 in	21,7 cm 8,5 in
G	Arm length measured from shoulder joint onwards	9,7 cm 3,8 in	10,5 cm 4,1 in
H	1/2 Upper arm width	11,8 cm 4,6 in	12,3 cm 4,8 in
I	v. Arm hole lenght measured from shoulder seam onwards	38,0 cm 14,9 in	42,0 cm 16,5 in
J	Body length measured from neck hole onwards	5,00 cm 1,9 in	5,00 cm 1,9 in
K	Complete length including neck hole	49,5 cm 19,4 in	57,5 cm 22,6 in
L	Number of buttons incl. spare button	4	4



All quoted measures are approximate dimensions and may differ from the actual measures slightly.