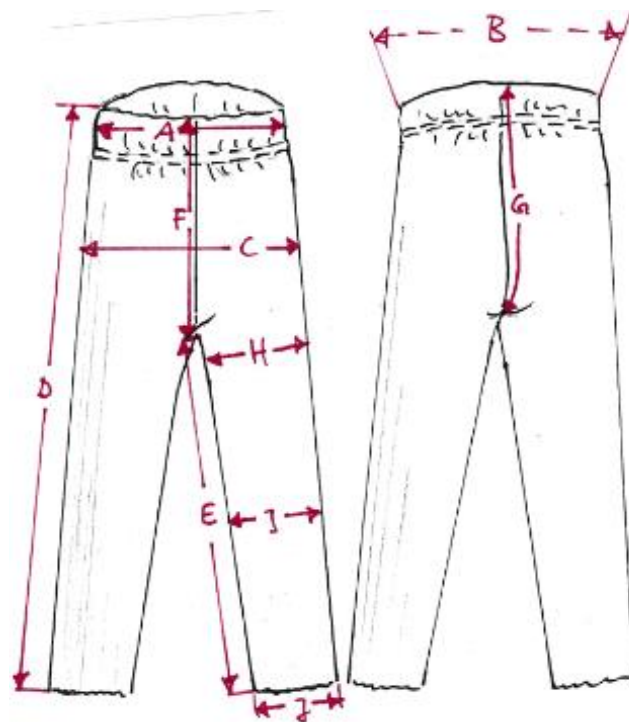


K19 Final Measures Knitted Leggings (in cm & inches)

	Description	50/56	62/68	74/80	86/92	98/104	110/116	122/128	134/140
A	1/2 waistband width unstretched	18,0 cm 7,0 in	19,0 cm 7,4 in	21,0 cm 8,2 in	22,0 cm 8,6 in	23,5 cm 9,2 in	25,5 cm 10,0 in	27,5 cm 10,8 in	28,5 cm 11,2 in
B	1/2 waistband stretched	27,0 cm 10,6 in	28,0 cm 11,02 in	31,0 cm 12,2 in	32,0 cm 12,5 in	35,0 cm 13,7 in	37,0 cm 14,5 in	39,0 cm 15,3 in	40,0 cm 15,7 in
C	½ hip width	16,5 cm 6,4 in	17,5 cm 6,8 in	18,5 cm 7,2 in	19,5 cm 7,6 in	22,0 cm 8,6 in	24,0 cm 9,4 in	25,5 cm 10,0 in	26,5 cm 10,4 in
D	Side length	37,0 cm 14,5 in	43,0 cm 16,9 in	49,0 cm 19,2 in	55,0 cm 21,6 in	61,0 cm 24,0 in	67,0 cm 26,3 in	73,0 cm 28,7 in	79,0 cm 31,1 in
E	Crotch length	20,0 cm 7,8 in	25,0 cm 9,8 in	29,0 cm 11,4 in	34,0 cm 13,3 in	39,5 cm 15,5 in	44,5 cm 17,5 in	49,5 cm 19,4 in	55,0 cm 21,6 in
F	Front body length	18,0 cm 7,0 in	19,0 cm 7,4 in	20,0 cm 7,8 in	21,0 cm 8,2 in	22,0 cm 8,6 in	24,0 cm 9,4 in	24,5 cm 9,6 in	24,5 cm 9,6 in
G	Back body length	20,5 cm 8,0 in	22,0 cm 8,6 in	23,0 cm 9,0 in	24,0 cm 9,4 in	25,0 cm 9,8 in	27,0 cm 10,6 in	27,5 cm 10,8 in	27,5 cm 10,8 in
H	½ Upper leg width	8,0 cm 3,14 in	8,5 cm 3,3 in	9,5 cm 3,7 in	10,5 cm 4,1 in	12,0 cm 4,7 in	12,5 cm 4,9 in	13,0 cm 5,1 in	13,0 cm 5,1 in
I	½ Knee width	6,5 cm 2,5 in	7,0 cm 2,7 in	7,5 cm 2,9 in	8,5 cm 3,3 in	9,5 cm 3,7 in	10,0 cm 3,9 in	10,5 cm 3,9 in	10,5 cm 3,9 in
J	½ hem width	5,5 cm 2,1 in	6,0 cm 2,3 in	6,5 cm 2,5 in	7,0 cm 2,7 in	7,5 cm 2,9 in	7,5 cm 2,9 in	8,0 cm 3,1 in	8,0 cm 3,1 in



All quoted measures are approximate dimensions and may differ from the actual measures slightly.