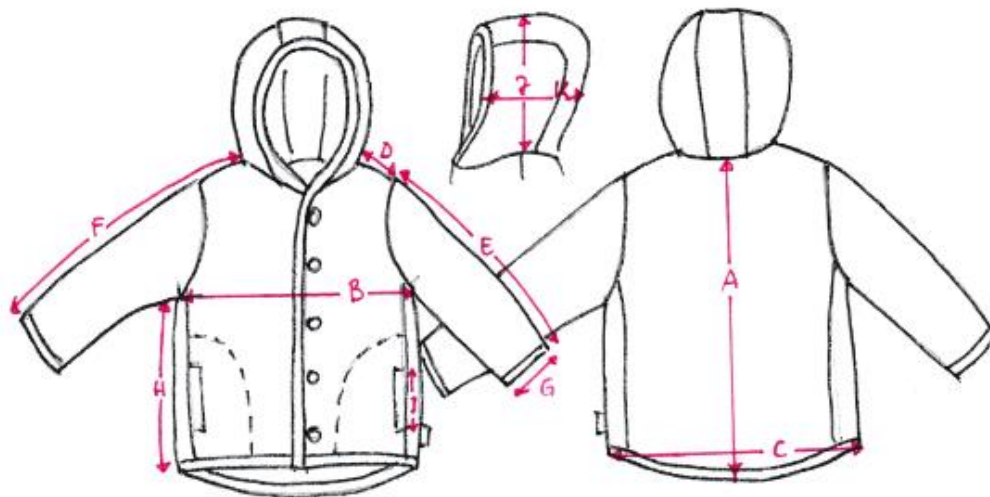


K19 Final Measures Boiled-Wool Jacket (in cm & inches)

| | Description | 62/68 | 74/80 | 86/92 | 98/104 | 110/116 |
|----------|---|--------------------|--------------------|--------------------|---------------------|--------------------|
| A | Back length | 35,3 cm 13,8 in | 39,1 cm 15,3 in | 42,8 cm 16,8 in | 47,7 cm 18,7 in | 52,8 cm 20,7 in |
| B | 1/2 chest width | 32,6 cm 12,8 in | 34,4 cm 13,5 in | 36,8 cm 14,4 in | 38,2 cm 15,03 in | 40,0 cm 15,7 in |
| C | 1/2 hem width, measured in straight line | 32,6 cm 12,8 in | 34,4 cm 13,5 in | 36,8 cm 14,4 in | 38,2 cm 15,0 in | 40,0 cm 15,7 in |
| D | Shoulder width | 7,1 cm 2,7 in | 7,4 cm 2,9 in | 7,8 cm 3,0 in | 8,1 cm 3,1 in | 8,5 cm 3,3 in |
| E | Sleeve length | 22,4 cm 8,8 in | 25,3 cm 9,9 in | 30,4 cm 11,9 in | 34,4 cm 13,5 in | 38,4 cm 15,1 in |
| F | Sleeve length incl. shoulder | 29,5 cm 11,6 in | 32,7 cm 12,8 in | 38,2 cm 15,0 in | 42,5 cm 16,7 in | 46,9 cm 18,4 in |
| G | 1/2 sleeve hem width, measured in straight line | 9,5 cm 3,7 | 9,8 cm 3,8 | 10,2 cm 4,0 | 10,5 cm 4,1 | 10,9 cm 4,2 |
| H | Side length | 16,3 cm 6,4 in | 19,1 cm 7,5 in | 20,3 cm 7,9 in | 24,2 cm 9,5 in | 28,3 cm 11,1 in |
| I | Pocket mouth length | 10,5 cm 4,1 in | 11,5 cm 4,5 in | 11,5 cm 4,5 in | 12,5 cm 4,9 in | 13,5 cm 5,3 in |
| J | Hood height, measured from shoulder point | 21,3 cm 8,3 in | 22,0 cm 8,6 in | 25,2 cm 9,9 in | 26,3 cm 10,3 in | 26,1 cm 10,2 in |
| K | Hood width | 18,1 cm 7,1 in | 18,5 cm 7,2 in | 21,5 cm 8,4 in | 21,5 cm 8,4 in | 21,5 cm 8,4 in |
| L | Number of buttons incl. spare button | 5 cm 1,9 in | 5 cm 1,9 in | 6 cm 2,3 in | 6 cm 2,3 in | 7 cm 2,7 in |



All quoted measures are approximate dimensions and may differ from the actual measures slightly.