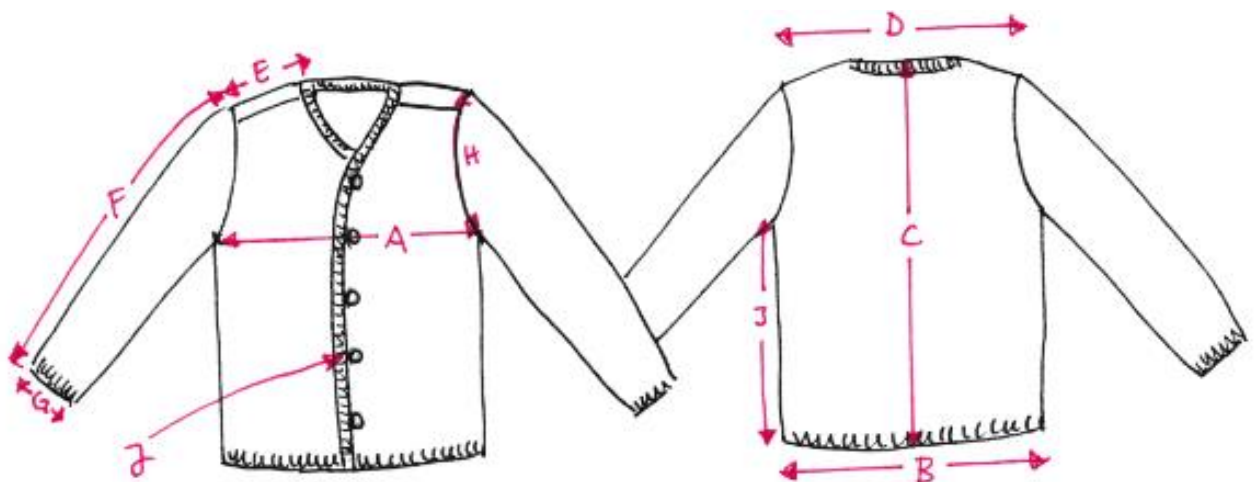


K19 Final Measures Knitted Jacket (in cm & inches)

	Description	86/92	98/104	110/116	122/128	134/140
A	1/2 chest measurement	30,0 cm 11,8 in	32,6 cm 12,8 in	33,8 cm 13,3 in	37,2 cm 14,6 in	40,6 cm 15,98 in
B	1/2 hem width	30,0 cm 11,81 in	32,6 cm 12,8 in	33,8 cm 13,3 in	37,2 cm 14,6 in	40,6 cm 15,9 in
C	Back length	40,7 cm 16,02 in	44,2 cm 17,4 in	48,5 cm 19,09 in	53,9 cm 21,22 in	58,6 cm 23,07 in
D	Shoulder width complete	24,7 cm 9,7 in	25,9 cm 10,1 in	28,1 cm 11,0 in	30,5 cm 12,0 in	32,5 cm 12,7 in
E	Single shoulder	7,4 cm 2,9 in	7,6 cm 2,9 in	8,2 cm 3,2 in	8,9 cm 3,5 in	9,5 cm 3,7 in
F	Sleeve length from shoulder onwards	31,0 cm 12,2 in	37,0 cm 14,5 in	41,0 cm 16,1 in	46,0 cm 18,1 in	51,0 cm 20,0 in
G	1/2 sleeve hem width	8,3 cm 3,2 in	8,5 cm 3,3 in	8,8 cm 3,4 in	9,3 cm 3,6 in	9,8 cm 3,8 in
H	Armhole height	14,3 cm 5,6 in	16,1 cm 6,3 in	17,2 cm 6,7 in	19,6 cm 7,7 in	21,2 cm 8,3 in
I	Side length	26,5 cm 10,4 in	29,0 cm 11,4 in	31,6 cm 12,4 in	35,0 cm 13,7 in	38,3 cm 15,0 in
J	Number of buttons	5	5	6	6	7



All quoted measures are approximate dimensions and may differ from the actual measures slightly.