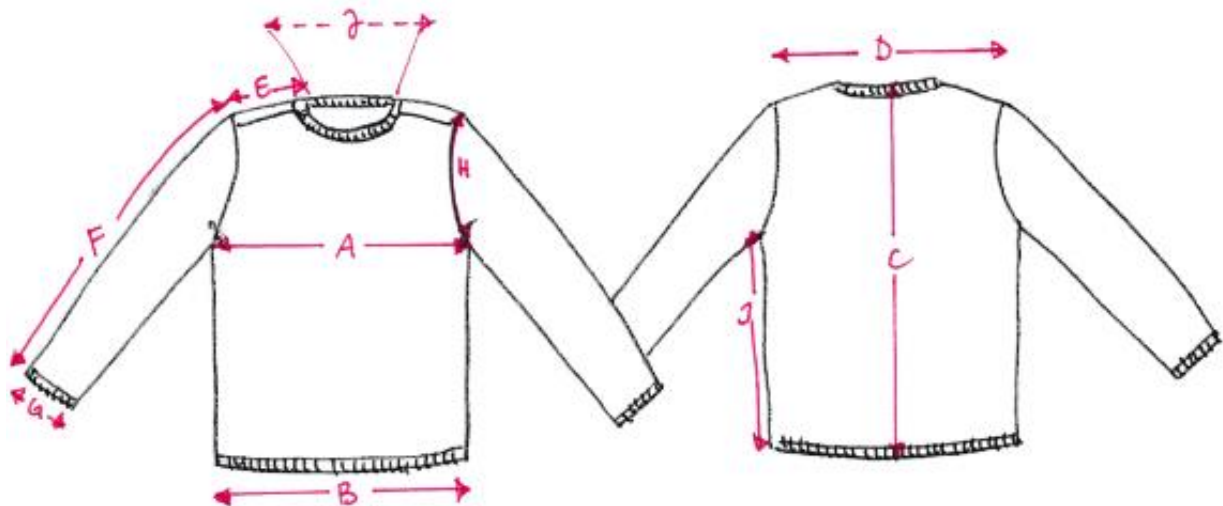


K19 Final Measures Basic-Jumper (in cm & inches)

	Description	86/92	98/104	110/116	122/128	134/140
A	1/2 chest	29,2 cm 11,4 in	31,8 cm 12,5 in	33,2 cm 13,0 in	36,4 cm 14,3 in	39,8 cm 15,6 in
B	1/2 Hem width	29,2 cm 11,4 in	31,8 cm 12,5 in	33,2 cm 13,0 in	36,4 cm 14,3 in	39,8 cm 15,6 in
C	Back length	39,5 cm 15,5 in	43,3 cm 17,0 in	47,5 cm 18,7 in	52,8 cm 20,7 in	57,5 cm 22,6 in
D	Shoulder width complete	24,7 cm 9,7 in	25,9 cm 10,1 in	28,1 cm 11,0 in	30,5 cm 12 in	32,5 cm 12,7 in
E	Single shoulder width	7,4 cm 2,9 in	7,6 cm 2,9 in	8,2 cm 3,2 in	8,9 cm 3,5 in	9,5 cm 3,7 in
F	Sleeve length measured from shoulder onwards	31,0 cm 12,2 in	37,0 cm 14,5 in	41,0 cm 16,1 in	46,0 cm 18,1 in	51,0 cm 20,0 in
G	1/2 Sleeve hem	8,3 cm 3,2 in	8,5 cm 3,3 in	8,8 cm 3,4 in	9,3 cm 3,6 in	9,8 cm 3,8 in
H	Arm hole height	14,2 cm 5,5 in	16,0 cm 6,2 in	17,1 cm 6,7 in	19,5 cm 7,6 in	21,1 cm 8,3 in
I	Side length	25,0 cm 9,8 in	27,6 cm 10,8 in	30,2 cm 11,8 in	33,6 cm 13,2 in	36,8 cm 14,4 in
J	Neck hole width minimum.	24,5 cm 9,6 in	26,0 cm 10,2 in	26,5 cm 10,4 in	28,0 cm 11,0 in	28,5 cm 11,2 in



All quoted measures are approximate dimensions and may differ from the actual measures slightly.