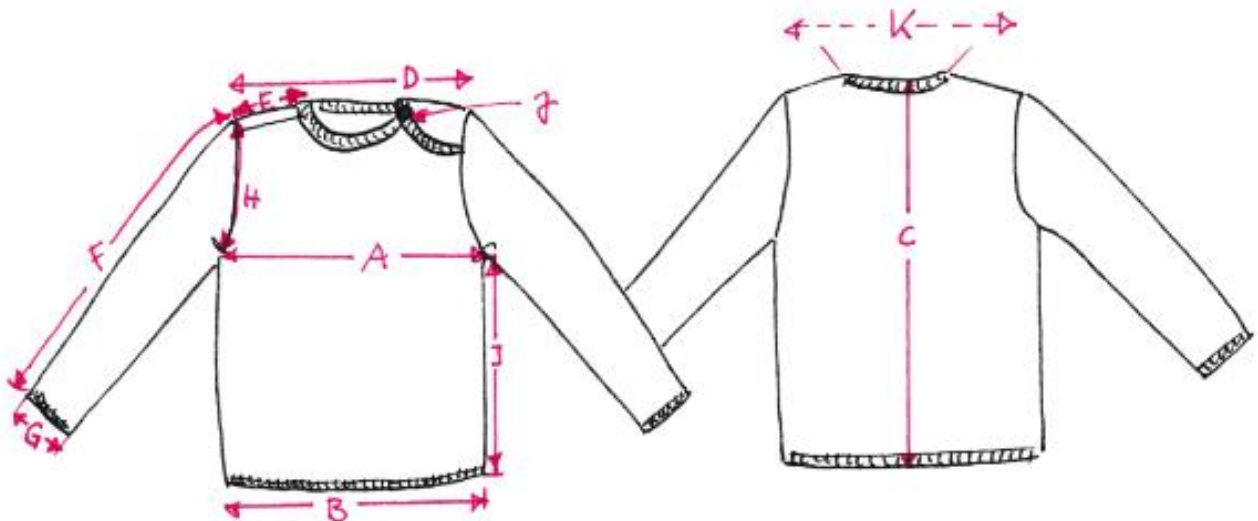


K19 Final Measures Melange - Jumper (in cm & inches)

	Description	50/56	62/68	74/80	86/92	98/104
A	1/2 Chest	23,2 cm 9,1 in	26,0 cm 10,2 in	28,6 cm 11,2 in	29,4 cm 11,5 in	31,8 cm 12,5 in
B	1/2 Hem width	23,2 cm 9,1 in	26,0 cm 10,2 in	28,6 cm 11,2 in	29,4 cm 11,5 in	31,8 cm 12,5 in
C	Back length	28,0 cm 11,0 in	31,1 cm 12,2 in	34,7 cm 13,6 in	39,5 cm 15,5 in	43,3 cm 17,0 in
D	Shoulder width complete	20,1 cm 7,9 in	22,2 cm 8,7 in	24,4 cm 9,6 in	24,7 cm 9,7 in	26,0 cm 10,2 in
E	Shoulder width right side	6,0 cm 2,3 in	6,8 cm 2,6 in	7,5 cm 2,9 in	7,6 cm 2,99 in	7,7 cm 3,0 in
F	Sleeve length measured from shoulder onwards	22,5 cm 8,8 in	24,5 cm 9,6 in	26,0 cm 10,2 in	31,0 cm 12,2 in	37,0 cm 14,5 in
G	1/2 Sleeve hem width	6,8 cm 2,6 in	7,1 cm 2,7 in	7,3 cm 2,8 in	8,3 cm 3,2 in	8,5 cm 3,3 in
H	Arm hole height	11,7 cm 4,6 in	12,3 cm 4,8 in	13,5 cm 5,3 in	15,0 cm 5,9 in	16,8 cm 6,6 in
I	Side length	16,5 cm 6,4 in	19,2 cm 7,5 in	21,5 cm 8,4 in	25,0 cm 9,8 in	27,5 cm 10,8 in
J	Number of buttons, left shoulder	1	1	1	1	1
K	Neck hole width minimum	19,5 cm 7,6 in	22,5 cm 8,8 in	23,5 cm 9,2 in	24,5 cm 9,6 in	26,0 cm 10,2 in



All quoted measures are approximate dimensions and may differ from the actual measures slightly.